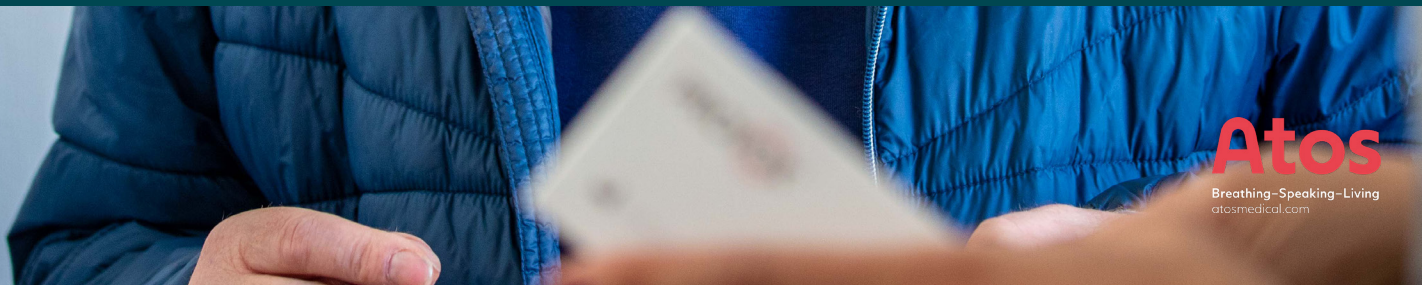


FREEVENT® DualCare™



Combining a speaking valve
with the benefits of an HME



Atos
Breathing-Speaking-Living
atosmedical.com



FREEVENT[®] DualCare[™]

Combining a speaking valve with the benefits of an HME - with a simple twist

A tracheostomy means change

Going through a tracheostomy means having to adjust to significant changes. You breathe through a tracheostomy tube, instead of your nose and mouth, which means that your ability to speak might be limited. Also, the important heating and moisturizing functions of the upper airways are lost. As a consequence, you might experience more mucus and coughing. It also means that you will have to learn to speak in a different way.

Regain the ability to speak, hands free

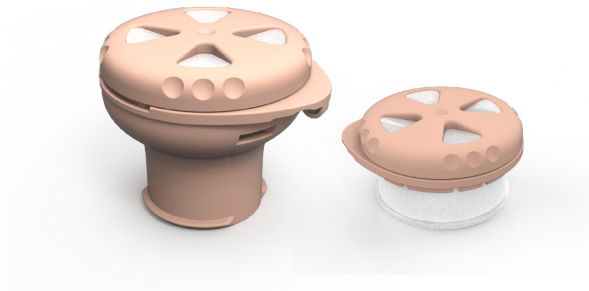
Speech is a very important way of communicating. To speak with a tracheostomy, you will need to redirect the air you breathe out to go up through your vocal cords. Freevent DualCare is a speaking valve which enables hands-free speech.

A Heat-and-Moisture Exchanger (HME) helps you take care of your lungs

After a tracheostomy, you no longer breathe through your nose and mouth, and air which is dry and too cold or too warm, enters your windpipe directly through the tracheostomy tube. This can lead to increased mucus production and coughing. Using an HME continuously has been shown to reduce mucus production and coughing for most people with a neck stoma, and as a consequence, can improve your pulmonary health.

An HME provides heat and moisture when breathing

When you breathe out through the HME, heat and moisture from your airways is kept within the HME. When breathing in again, this heat and moisture is released from the HME, and is returned to your airways. This way, compensating for the lost functions of your nose.



FREEVENT® DualCare™

Freevent DualCare combines a speaking valve with an HME, and in this way, enables hands-free speech and supports your lungs with important heat and moisture. The switch between the speaking mode and HME mode is done with a simple twist of the lid of the speaking valve.

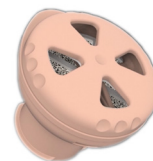
Speaking mode

Freevent DualCare is put into speaking mode by twisting the lid of the speaking valve until it clicks into speaking mode position and the flexible membrane covers the openings of the valve. When you breathe out, the air is guided through your vocal cords and out through your mouth. When Freevent DualCare is in speaking mode, there is no HME effect.



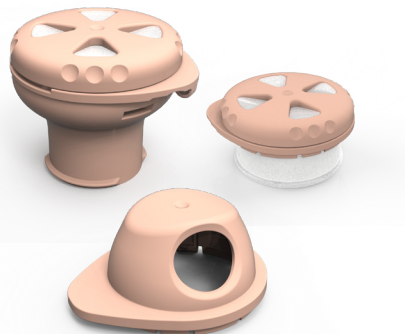
HME mode

Freevent DualCare is put into HME mode by twisting the lid of the speaking valve until it clicks into position. In the HME mode, you breathe both in and out through the HME, saving heat and moisture when breathing out, and giving heat and moisture back when inhaling. When Freevent DualCare is in HME mode, speaking is not possible.



An HME should be used day and night

It is very important to use an HME as much as possible. The Freevent DualCare system makes it possible for you to use an HME both day and night. In the daytime use the HME with Freevent DualCare Speaking Valve and with the HME DigiTop while you sleep. The Freevent HMEs are available in both 15 mm and 22 mm tube connection sizes.



IMPORTANT: Do not use the speaking valve during sleep since the airway could be blocked unintentionally. Use the HME DigiTop instead. Freevent DualCare Speaking Valve can only be used with tracheostomy tubes if you have free passage for air through the upper airways.



The Benefits of Freevent DualCare



Hands-free speaking

While in speaking mode, Freevent DualCare makes it possible for you to speak hands-free.



Taking care of your lungs

To improve or maintain your lung health, you should use the HME mode as much as possible, whenever you are not speaking.



Breathing easier

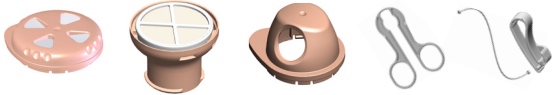
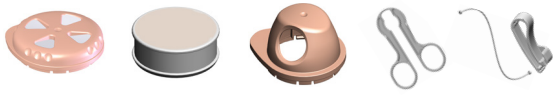
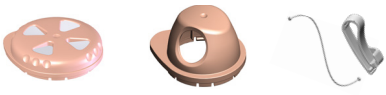





When needed, switch to HME mode to lower breathing resistance.



Day and night

24/7 HME use is important. Use Freevent HMEs in combination with Freevent DualCare Speaking Valve during the day and HME DigiTop while you sleep.



Order information	REF	Rx*
	Freevent DualCare Set 15 <ul style="list-style-type: none"> • 1 pc Speaking Valve • 30 pcs HME 15 • 1 pc HME DigiTop • 1 pc Removal Aid • 1 pc Connection Strap 	7741 Rx
	Freevent DualCare Set 22 <ul style="list-style-type: none"> • 1 pc Seaking Valve • 30 pcs HME 22 • 1 pc HME DigiTop • 1 pc Removal Aid • 1 pc Connection Strap 	7740 Rx
	Freevent DualCare Speaking Valve <ul style="list-style-type: none"> • 1 pc Speaking Valve • 1 pc HME DigiTop • 1 pc Connection Strap 	7744 Rx
	Freevent HME 15 Regular <ul style="list-style-type: none"> • 30 pcs 	7742 Rx
	Freevent HME 22 Regular <ul style="list-style-type: none"> • 30 pcs 	7747 Rx
	HME DigiTop O₂ <ul style="list-style-type: none"> • 1 pc 	7756 Rx
	Removal Aid <ul style="list-style-type: none"> • 2 pcs 	7745 Rx
	Freevent Connection Strap <ul style="list-style-type: none"> • 2 pcs 	7746 Rx

Always read the Instructions for use before starting to use any of the products. For Instructions for use, please visit www.atosmedical.com.

* US only.

Contact us for more information

We develop products in close cooperation with leading institutions, doctors, physicians, nurses, speech language pathologists and patients from all over the world, to improve patients' quality of life through smart and innovative solutions. For more information about the Freevent assortment www.atosmedical.com.

MC2502-TcEN_202105

Head office:

Atos Medical AB,
Hyllie Boulevard 17,
SE-215 32 Malmö, Sweden

Tel: +46 (0) 415 198 00,
Email: info@atosmedical.com

Manufacturer:

Atos Medical AB,
Kraftgatan 8,
SE-242 35 Horby, Sweden



Atos

Breathing-Speaking-Living
atosmedical.com

© Atos Medical AB, 2021